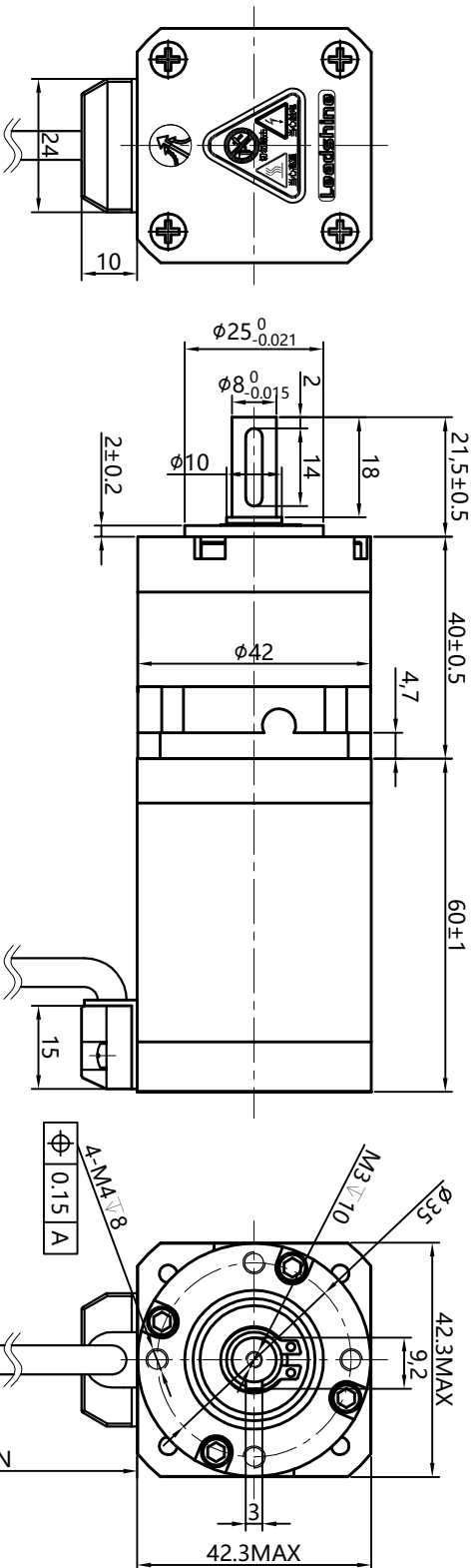


Dimension: (Unit: mm)



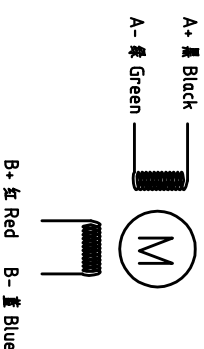
Common Rating

Step angle	18°
Position accuracy	18±0.09°
Dielectric strength	500VAC 1min
Insulation resistance	100MΩhm(500VDC)
Insulation class	B
Temp rise(Max)	80K
Radial play	Max:0.02mm(Load 4.50g)
Axial play	Max:0.08mm(Load 900g)

Specification:

Current/phase	2.5 A
Voltage	2.5 V
DC Resistance/phase ±10%	1.0 Ω
Inductance/phase ±20%	2.4 mH
Holding torque	0.8 N·M
Inertia	0.11 kg·cm ²
Weight	0.45 kg
Reduction ratio	1:10

Motor Connctions:



技术要求:
 1、未注形位公差按GB/T 1184-K;
 2、未注尺寸公差按GB/T 1804-m。
 (除非另外指定)

设计 Designed	杨陶	2021-10-09	标准化 Standardization	名称(Title)	开环步进电机
制图 Drawn	杨陶	2021-10-09		型号(Model)	42CM08-RD10 MS20
校对 Proofread			审核 Checked	图号(DWG No.)	LS-42CM08-RD10 MS20
工艺 Processed			批准 Approved	重量(Weight) / 份:	
表单编号 Form No.	LS-MT-01-07B		版本/版本 Edition/Serial NO.	阶段标记(Surge Mark)	
				料号(Part No.)	
				比例(Scale)	1:1
				共1页第1页 Page of 1	
					雷赛智能 Leadshine

F

E

D

C

B

A

1

2

3

4

5

6

7

8

9

10